



Visual Dialplan

for Asterisk®

Revolutionize dialplan development

Quick Start Guide

What is Visual Dialplan?

Visual Dialplan is innovative software tool for visual modeling of Asterisk dialplan. Using drag and drop capabilities, intuitive component editors, predefined sample dialplans and context sensitive help, new dialplan can be built and maintained quickly and easily.

Visual Dialplan enables Asterisk users to create complex dialplans in a convenient, intuitive and natural way using comfort of a modern Rapid Application Development environment without sacrificing functionality of a standard Asterisk dialplan.

System Requirements

Current version of Visual Dialplan is available for Microsoft Windows and Linux operating systems.

Visual Dialplan requires Java Runtime Environment (JRE) 6.0 which is bundled with the Visual Dialplan downloadable package and should not be downloaded and installed separately.

Downloading Visual Dialplan

There are two versions of the Visual Dialplan available for download, Visual Dialplan Standard and Visual Dialplan Professional.

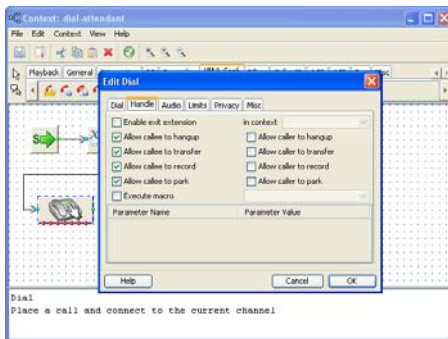
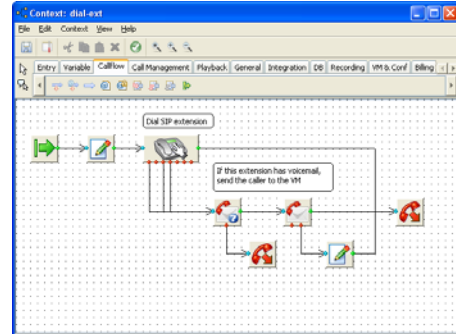
Visual Dialplan Standard is intended for average Asterisk user and includes commonly used components that are sufficient in most cases like VoIP and traditional dial in and dial out, auto attendant, IVR, voicemail, conferencing, music on hold, voice recording, etc.

Visual Dialplan Professional is intended for advanced Asterisk users, consultants and Asterisk professionals, and includes full list of components and functions available in the Asterisk dialplan. Beside features supported by the Standard version, this version includes additional features that will enable:

- Asterisk dialplan integration with third party applications
- Creation and manipulations with Asterisk queues (ACD)
- Billing related components
- ASR related components and other advances components and functions.

Visualize your call flow

With Visual Dialplan you can simply drag and drop components and connect them to design the call flow. Components are organized on the component toolbar in the following categories: Call flow, Call management, Billing, ASR, ACD, etc.

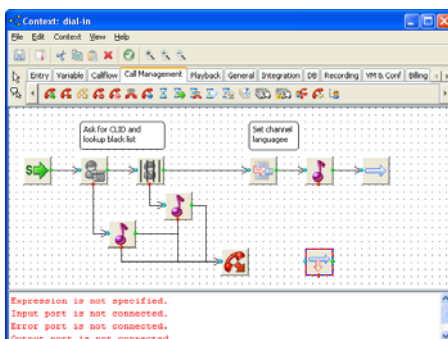
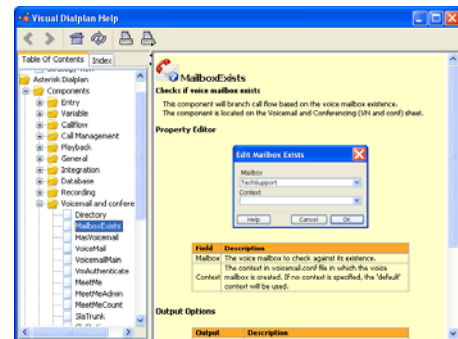


Model it, don't code

Visual Dialplan provides specialized editors for each component. Just double click the component from the working area and a property editor will appear. You don't have to know syntax and properties for each and every dialplan application. Property editors provide easy and intuitive way for setting these values.

Find information in the local help system

All the information you need to build a dialplan is now available on your desktop, integrated with the Visual Dialplan and presented in a natural way – no need to search the Internet or list the books, just select the component and press F1 to get all the information about that component.



Validate the dialplan

Check the dialplan before deploying it on the Asterisk box. You can validate a dialplan for errors using the validate toolbar button. Components that are not properly connected or configured will be marked in red and all errors will be listed in the info area.



Visual Dialplan

for Asterisk®

Revolutionize dialplan development

Deploy the Dialplan

When you are ready to deploy the dialplan, just select one of the deploy servers, from a list of configured servers. Visual Dialplan will generate standard Asterisk dialplan code and either save it to the local file system or deploy it to the remote Asterisk server using SSH. Visual Dialplan will also reload Asterisk server configuration thus making dialplan changes immediate.

Online Documentation

For additional information on installing and using Visual Dialplan, please visit our web site at <http://www.apstel.com>. You can search the list of frequently asked questions or post a message to our support team.

We hope you will enjoy using Visual Dialplan.

Sincerely,
Apstel